

Guilford Business Park - Industrial, Retail, & Office Space

1 - 12 Wendy Court | Greensboro, NC 27409



- ♦ Available For Lease
- ♦ From 812 SF - 11,000 SF
- ♦ HVAC in Warehouse
- ♦ Ceiling Heights: 10' - 16'
- ♦ Drive-in & Dock High Doors
- ♦ Three Phase Power

Office and industrial space conveniently located in Guilford Business Park at the corner of West Market Street and Guilford College Road with quick access to Interstate 40.

Ready to occupy with a mix of flexible floor plans. Plenty of offices with windows, 200 amp/208V three phase power in all units with potential for 460V, and plenty of parking.



JJ Joubran, CCIM

(336) 270-9775

JJ@JoubranCommercial.com

Guilford Business Park - Industrial, Retail, & Office Space

1 - 12 Wendy Court | Greensboro, NC 27409



JJ Joubran, CCIM

(336) 270-9775

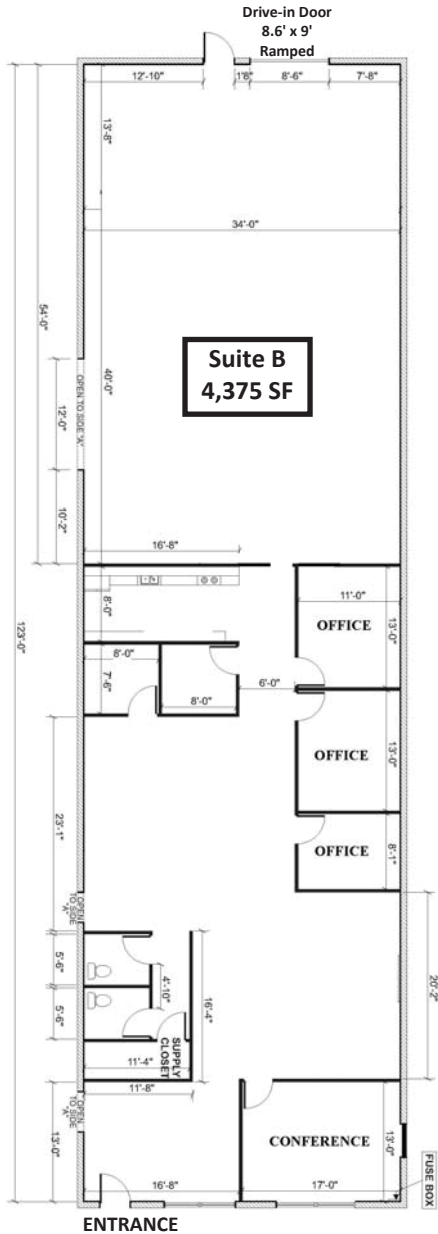
JJ@JoubranCommercial.com

Guilford Business Park

3 Wendy Court | Greensboro, NC 27409

3-B Wendy Court

- ❖ Size: 4,375 SF ±
- ❖ Partially Renovated
- ❖ Warehouse Space: 1,819 SF
- ❖ Office Space: 2,556 SF
- ❖ Clear Height: 14'
- ❖ Dock High Doors: 0
- ❖ Drive-In Doors: 1 (8.6' x 9')
- ❖ Power: 3 Phase, 200 amp, 208 Volt



JJ Joubran, CCIM

(336) 270-9775

JJ@JoubranCommercial.com

Guilford Business Park

3 Wendy Court | Greensboro, NC 27409

3-B Wendy Court

- ❖ Size: 4,375 SF ±
- ❖ Partially Renovated
- ❖ Warehouse Space: 1,819 SF
- ❖ Office Space: 2,556 SF
- ❖ Clear Height: 14'
- ❖ Dock High Doors: 0
- ❖ Drive-In Doors: 1 (8.6' x 9')
- ❖ Power: 3 Phase, 200 amp, 208 Volt



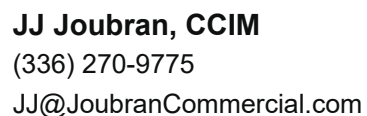
JJ Joubran, CCIM

(336) 270-9775

JJ@JoubranCommercial.com

3 Wendy Court | Greensboro, NC 27409

- ❖ Size: 7,200 - 10,000 SF ±
- ❖ Warehouse Space: 2,400 - 5,200 SF
- ❖ Office Space: 4,800 SF
- ❖ Clear Height: 13' to HVAC & 16' clear
- ❖ Drive-In Doors: 1 (8' wide x 8' tall)
- ❖ Dock High Doors: 1 (8' wide x 8' tall)
- ❖ Power: 3 Phase, 200 amp, 208 Volt

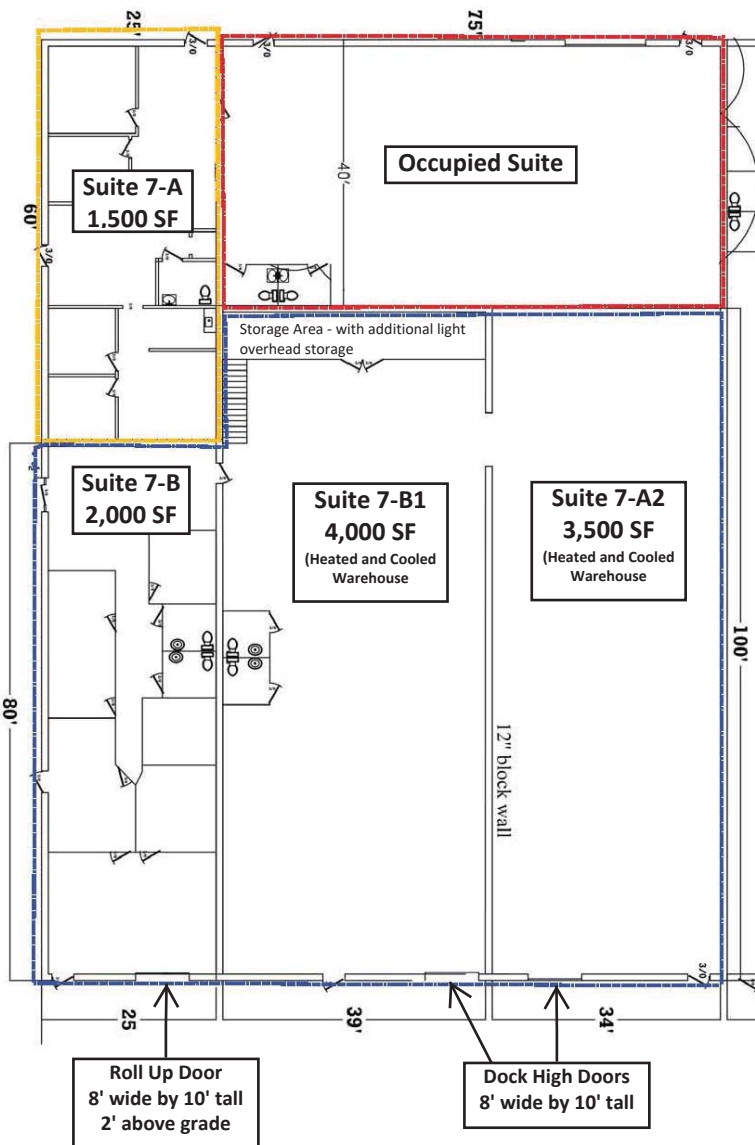


Guilford Business Park

7 Wendy Court | Greensboro, NC 27409

7-A&B Wendy Court

- ❖ Size: 11,000 SF ±
- ❖ Warehouse Space: 7,500 SF
- ❖ Office Space: 3,500 SF
- ❖ Fully Heated & Cooled
- ❖ Clear Height: 15'4"
- ❖ Dock High Doors: 2 (8' wide x 10' tall)
- ❖ Drive-In Doors: 1 (8' wide x 10' tall), 2' above grade
- ❖ Power: 3 Phase, 200 amp, 208 Volt



JJ Joubran, CCIM

(336) 270-9775

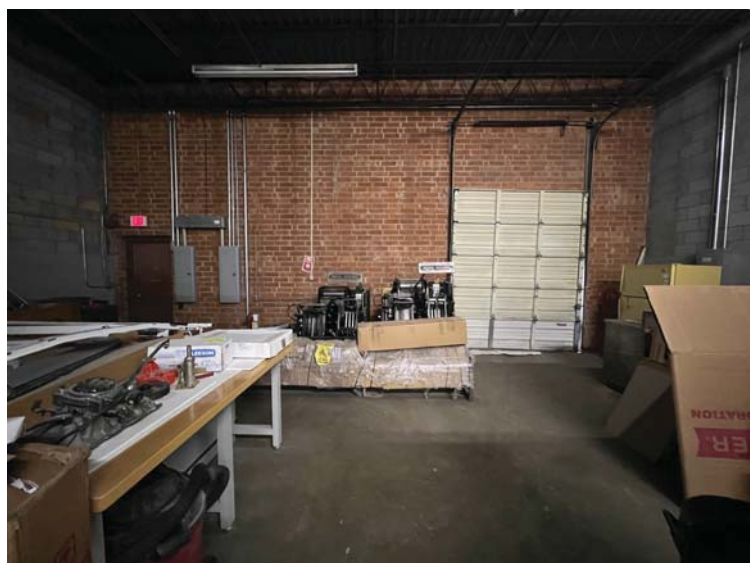
JJ@JoubranCommercial.com

Guilford Business Park

7 Wendy Court | Greensboro, NC 27409

7-A&B Wendy Court

- ❖ Size: 11,000 SF ±
- ❖ Warehouse Space: 7,500 SF
- ❖ Office Space: 3,500 SF
- ❖ Fully Heated & Cooled
- ❖ Clear Height: 15'4"
- ❖ Dock High Doors: 2 (8' wide x 10' tall)
- ❖ Drive-In Doors: 1 (8' wide x 10' tall), 2' above grade
- ❖ Power: 3 Phase, 200 amp, 208 Volt



JJ Joubran, CCIM

(336) 270-9775

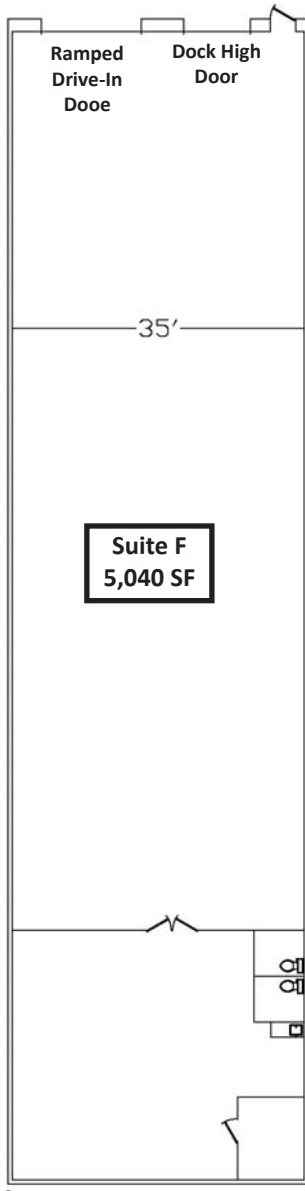
JJ@JoubranCommercial.com

Guilford Business Park

7 Wendy Court | Greensboro, NC 27409

7-F Wendy Court

- ❖ Size: 5,040 SF ±
- ❖ Warehouse Space: 4,040 SF
- ❖ Office Space: 1,100 SF
- ❖ Fully Heated & Cooled
- ❖ Clear Height: 15'
- ❖ Dock High Doors: 1 (8' wide x 10' tall)
- ❖ Drive-In Doors: 1 (12' wide x 14' tall)
- ❖ Power: 3 Phase, 200 amp, 208 Volt



JJ Joubran, CCIM

(336) 270-9775

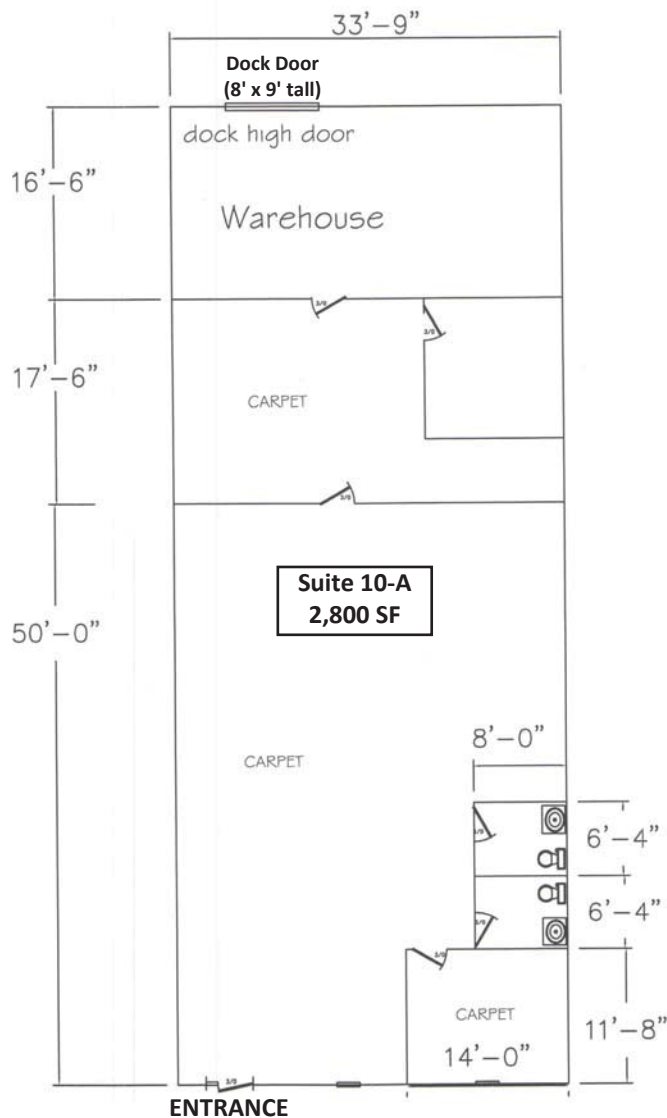
JJ@JoubranCommercial.com

Guilford Business Park

10 Wendy Court | Greensboro, NC 27409

10-A Wendy Court

- ❖ Size: 2,800 SF ±
- ❖ Warehouse Space: 557 SF
- ❖ Office Space: 2,243 SF
- ❖ Fully Heated & Cooled
- ❖ Clear Height: 11'
- ❖ Drop Ceiling: 10'
- ❖ Dock High Doors: 1 (8' wide x 9' tall)
- ❖ Power: 3 Phase, 200 amp, 208 Volt



JJ Joubbran, CCIM

(336) 270-9775

JJ@JoubbranCommercial.com

Guilford Business Park

10 Wendy Court | Greensboro, NC 27409

10-A Wendy Court

- ❖ Size: 2,800 SF ±
- ❖ Warehouse Space: 557 SF
- ❖ Office Space: 2,243 SF
- ❖ Fully Heated & Cooled
- ❖ Clear Height: 11'
- ❖ Drop Ceiling: 10'
- ❖ Dock High Doors: 1 (8' wide x 9' tall)
- ❖ Power: 3 Phase, 200 amp, 208 Volt



JJ Joubran, CCIM

(336) 270-9775

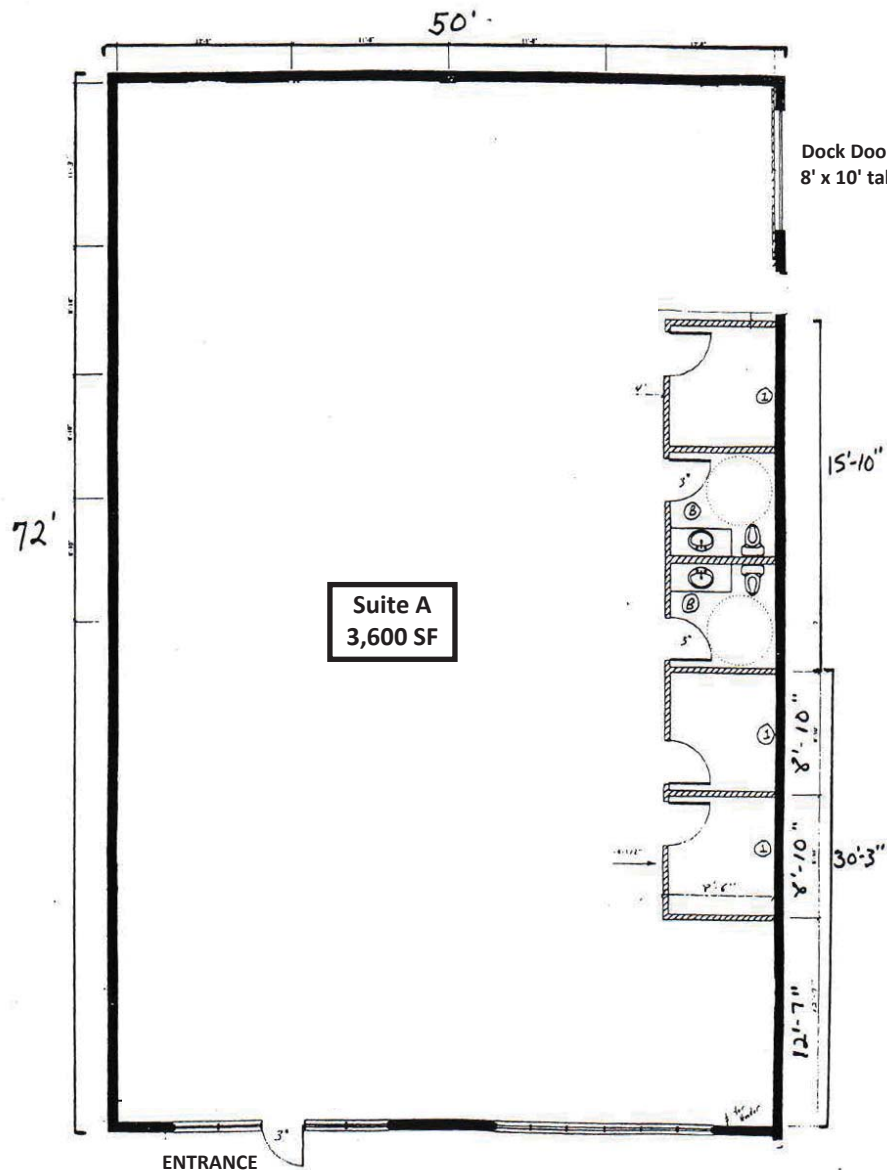
JJ@JoubranCommercial.com

Guilford Business Park

5711 West Market Street | Greensboro, NC 27409

5711-A West Market Street

- ❖ Size: 3,600 SF ±
- ❖ Clear Height: 10'
- ❖ Retail Space
- ❖ Dock High Doors: 1
- ❖ Fully Heated and Cooled
- ❖ Drive-In Doors: 0
- ❖ Power: 3 Phase, 200 amp, 208 Volt



JJ Joubran, CCIM

(336) 270-9775

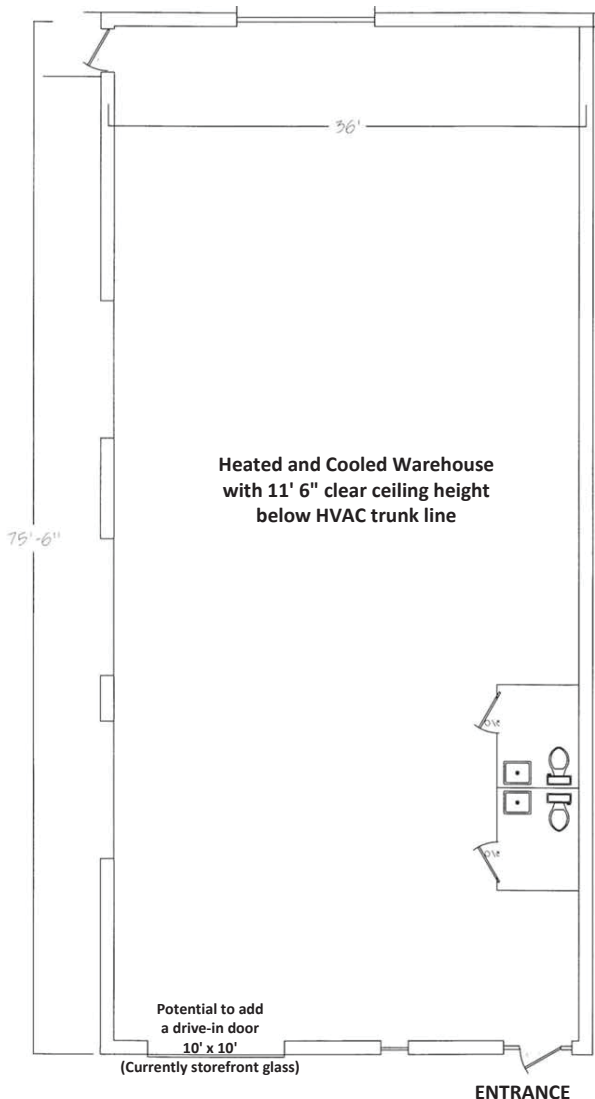
JJ@JoubranCommercial.com

Guilford Business Park

5715 West Market Street | Greensboro, NC 27409

5715-D West Market Street

- ❖ Size: 2,718 SF ±
- ❖ Clear Height: 11' 6"
- ❖ Retail Space
- ❖ Dock High Doors: 0
- ❖ Fully Heated and Cooled
- ❖ Drive-In Doors: 0
- ❖ Power: 3 Phase, 200 amp, 208 Volt



JJ Joubran, CCIM

(336) 270-9775

JJ@JoubranCommercial.com

Guilford Business Park



Contact:
JJ Joubran, CCIM
Joubran Commercial Properties
(336) 270-9775
JJ@JoubranCommercial.com
www.JoubranCommercial.com