

Dover Square Office - Retail Space

1616-B Battleground Avenue | Greensboro, NC 27408



- ♦ Available For Lease
- ♦ 2,516 RSF
- ♦ Currently Built as Office Space
- ♦ Excellent Location
- ♦ Plenty of Parking
- ♦ Building and Pylon Street Signage Available

Conveniently located on Battleground Avenue and minutes from The Friendly Center, Green Valley Road, and Downtown Greensboro.

Suite B is located between Blow Hair Salon and Huntington Learning Center and currently used as a professional office. There are 13 private offices (which include 3 with windows) and two restrooms.

Available January 1, 2026 or possibly sooner.



JJ Joubran, CCIM, SIOR

(336) 270-9775

JJ@JoubranCommercial.com

Dover Square Office - Retail Space

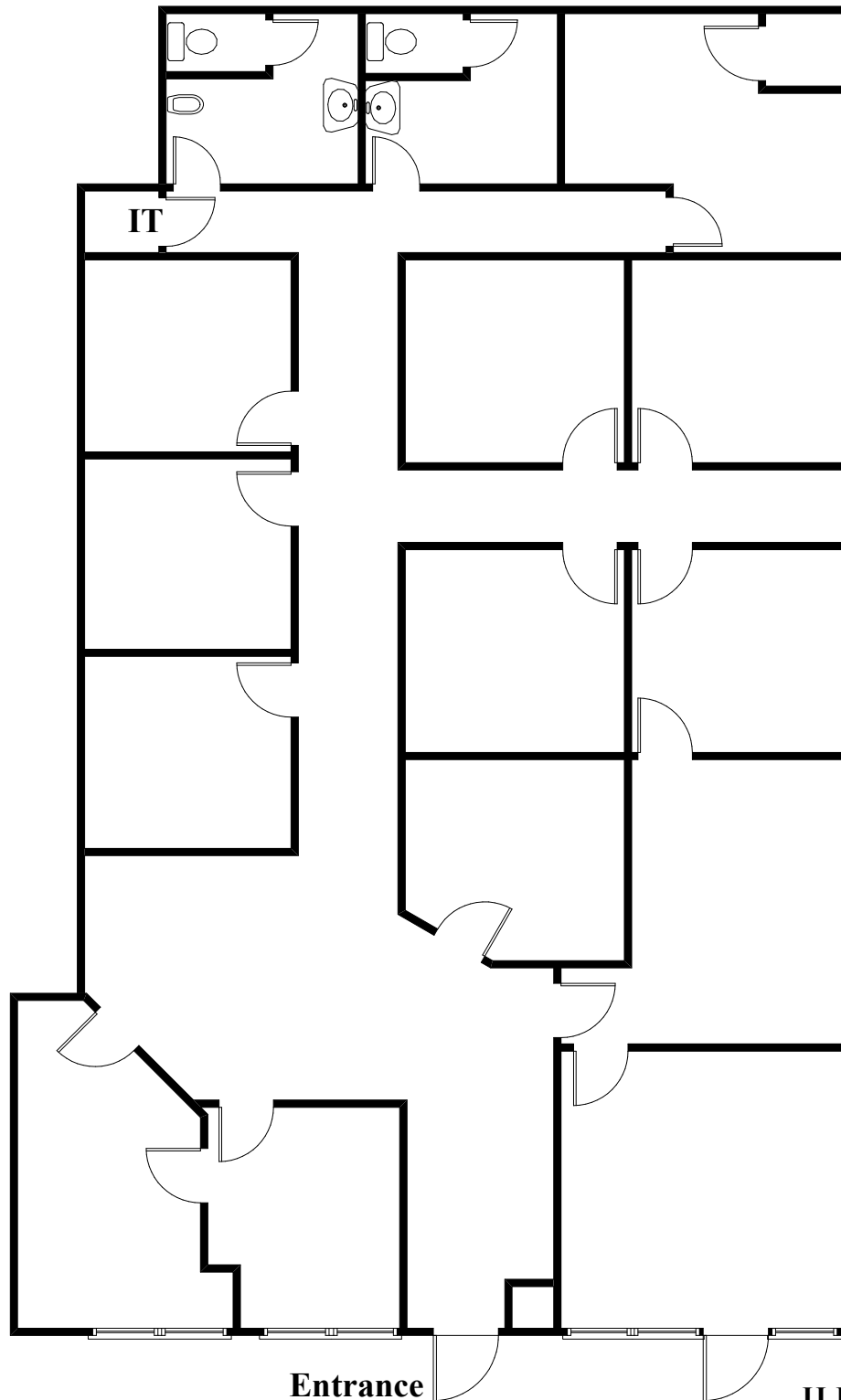
1616-B Battleground Avenue | Greensboro, NC 27408



JJ Joubran, CCIM, SIOR
(336) 270-9775
JJ@JoubranCommercial.com

1616-B Battleground

2,516 RSF +/-



Contact:
JJ Joubran, CCIM, SIOR
Joubran Commercial Properties
(336) 270-9775
JJ@JoubranCommercial.com
www.JoubranCommercial.com

Dover Square
1616 Battleground Avenue
Parking Plan - 112 parking spaces



Contact:
JJ Joubran, CCIM, SIOR
Joubran Commercial Properties
(336) 270-9775
JJ@JoubranCommercial.com
www.JoubranCommercial.com

Dover Square Office - Retail

1616 Battleground Avenue, Greensboro, NC

