

# Dover Square Retail - Office - Salon Space

1616 Battleground Avenue, Suite B and Suite C | Greensboro, NC 27408



- ♦ Available For Lease
- ♦ From 1,860 SF - 4,376 SF
- ♦ Suite B is 2,516 SF and currently built for an Office
- ♦ Suite C is 1,860 SF and currently built as a Salon
- ♦ Building and Pylon Street Signage Available

Conveniently located on Battleground Avenue and minutes from The Friendly Center, Green Valley Road, and Downtown Greensboro.

The property is located across the street from Starbucks and has a great high end tenant mix including: Simply Meg's, Main & Taylor, Randy McManus Designs, Bibs and Kids, Studio Stitch, and Huntington Learning Center.

Call for more details.



**JJ Joubbran, CCIM, SIOR**

(336) 270-9775

JJ@JoubbranCommercial.com

# Dover Square Retail - Office - Salon Space

1616 Battleground Avenue, Suite B | Greensboro, NC 27408



**JJ Joubran, CCIM, SIOR**

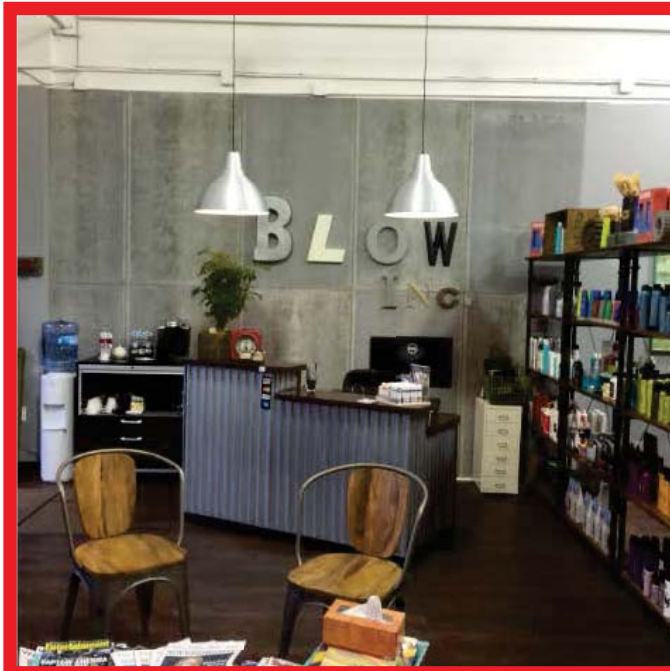
(336) 270-9775

JJ@JoubranCommercial.com



# Dover Square Retail - Office - Salon Space

1616 Battleground Avenue, Suite C | Greensboro, NC 27408



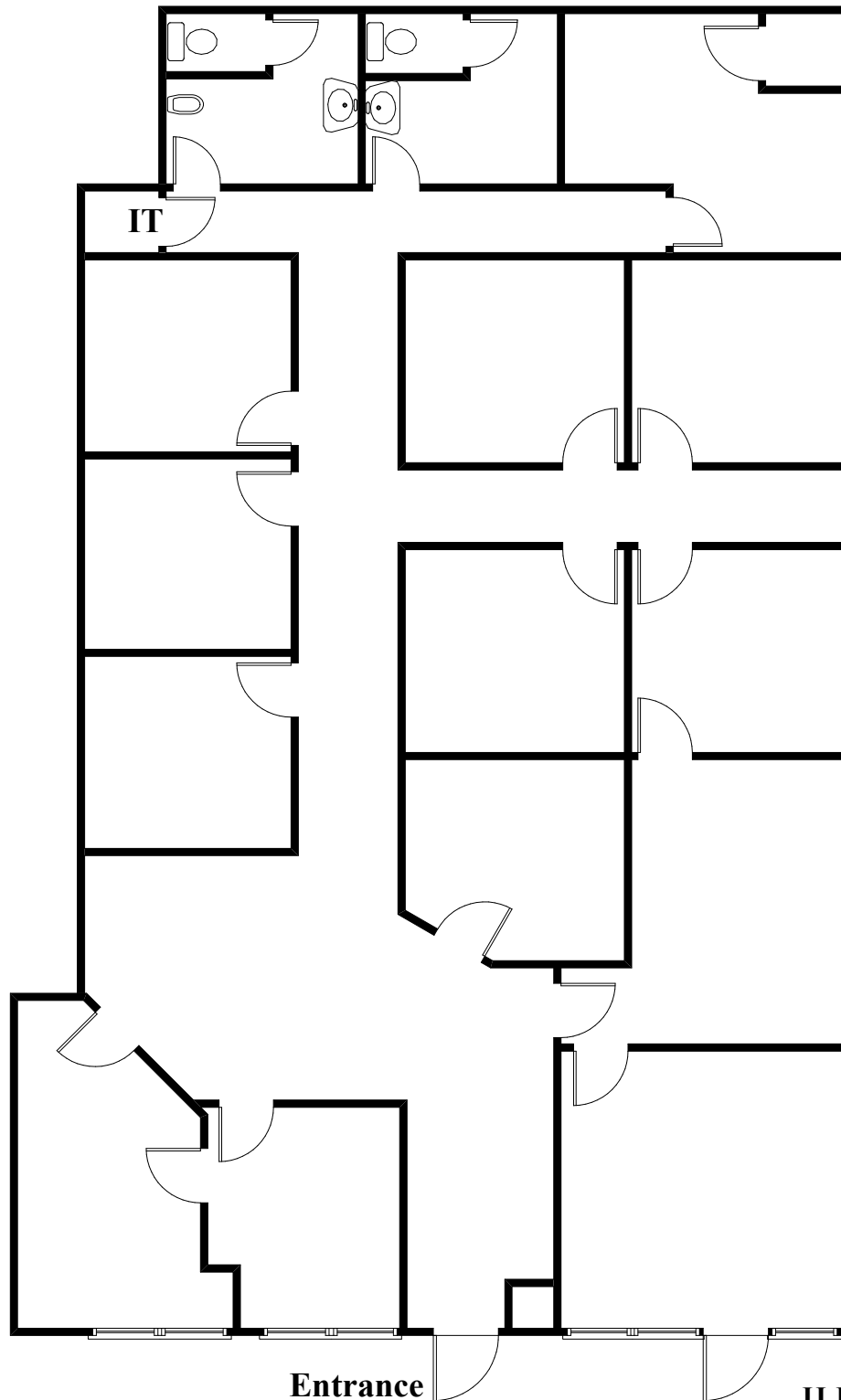
**JJ Joubran, CCIM, SIOR**

(336) 270-9775

JJ@JoubranCommercial.com

# 1616 Battleground Ave, Suite B

## 2,516 SF +/-



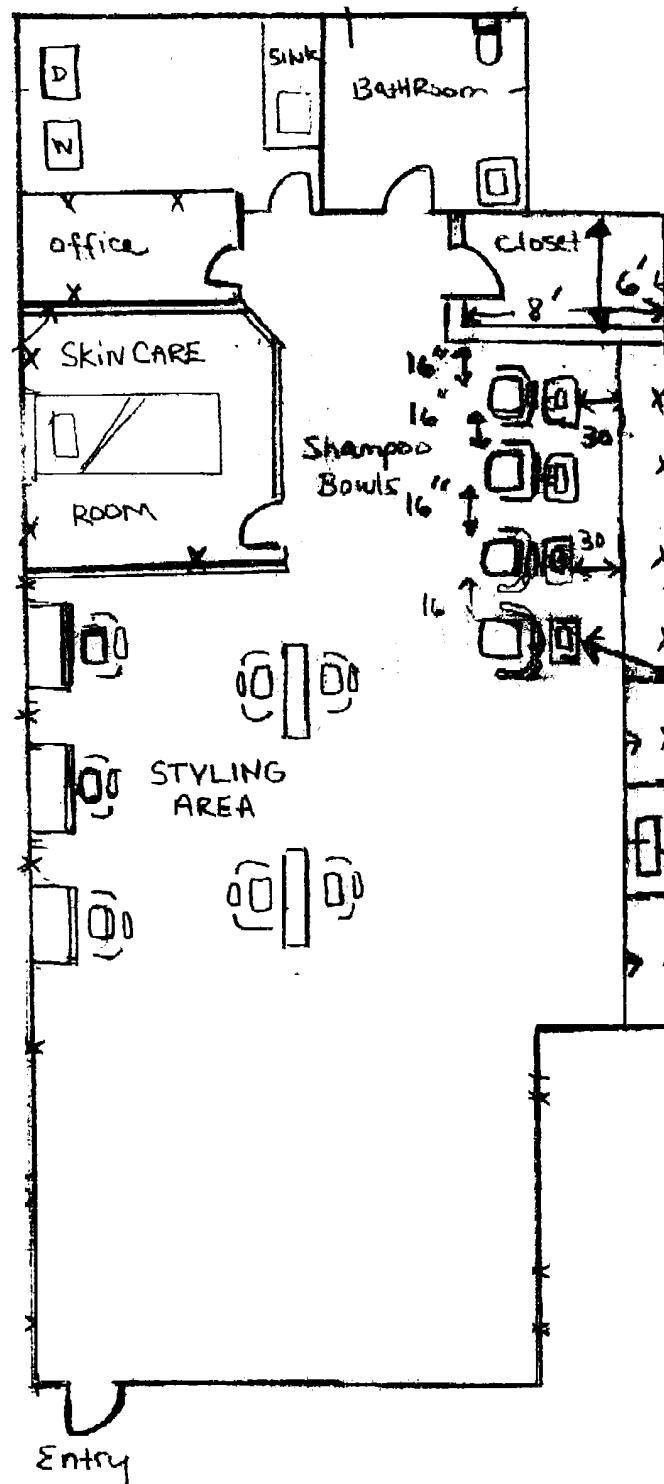
**Contact:**

**JJ Joubran, CCIM, SIOR**  
**Joubran Commercial Properties**  
**(336) 270-9775**

[JJ@JoubranCommercial.com](mailto:JJ@JoubranCommercial.com)  
[www.JoubranCommercial.com](http://www.JoubranCommercial.com)

# 1616 Battleground Ave, Suite C

## 1,860 SF +/-



**Contact:**  
JJ Joubran, CCIM, SIOR  
Joubran Commercial Properties  
(336) 270-9775  
[JJ@JoubranCommercial.com](mailto:JJ@JoubranCommercial.com)  
[www.JoubranCommercial.com](http://www.JoubranCommercial.com)



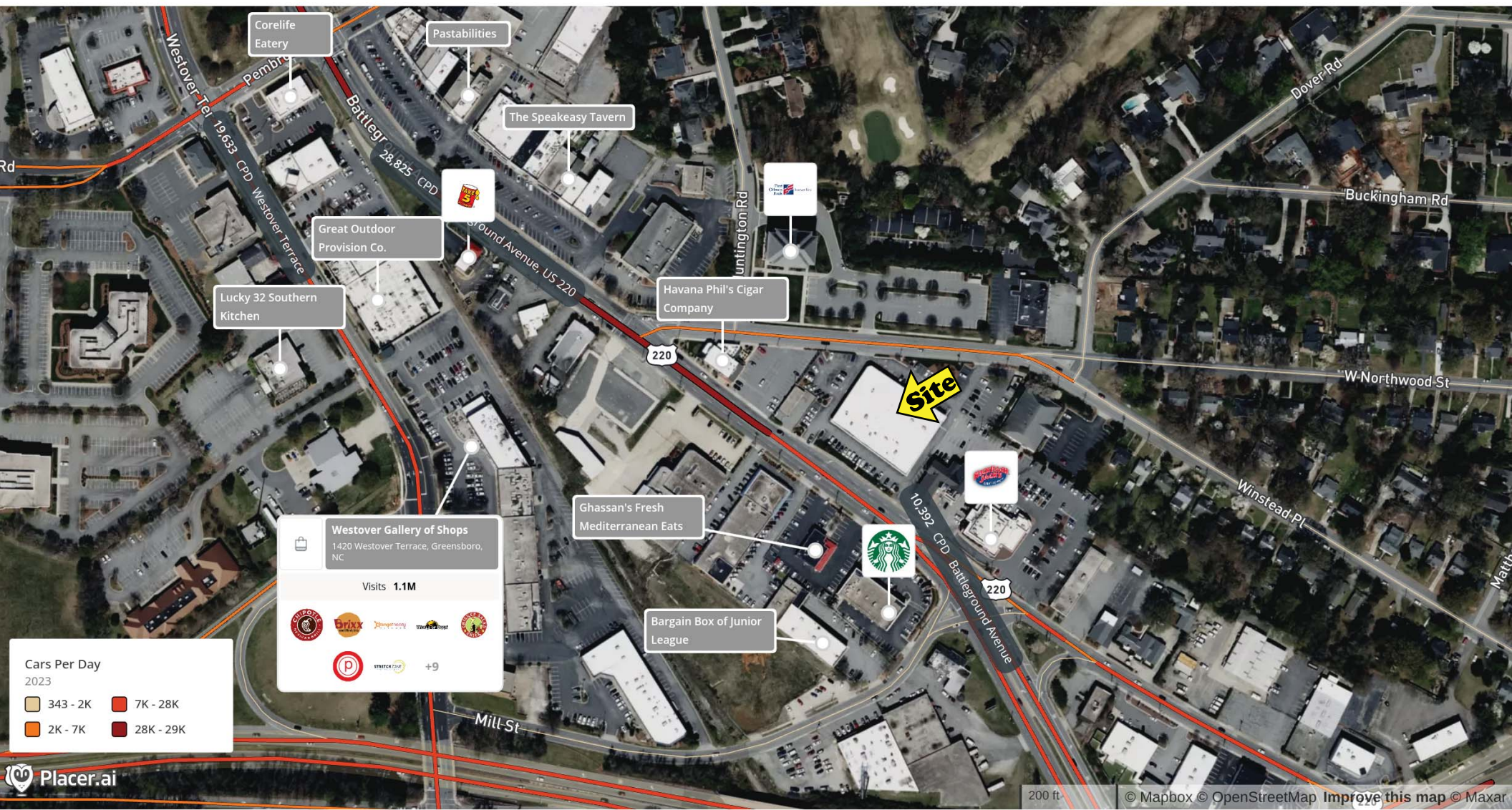
**Dover Square**  
**1616 Battleground Avenue**  
**Parking Plan - 112 parking spaces**



*Contact:*  
**JJ Joubran, CCIM, SIOR**  
**Joubran Commercial Properties**  
**(336) 270-9775**  
[JJ@JoubranCommercial.com](mailto:JJ@JoubranCommercial.com)  
[www.JoubranCommercial.com](http://www.JoubranCommercial.com)



Dover Square Office - Retail  
1616 Battleground Avenue, Greensboro, NC



Jun 1, 2024 - May 31, 2025  
Data provided by Placer Labs Inc. (www.placer.ai)