

Office and Warehouse Building

500 S. Edwardia Drive | Greensboro, NC 27409



- ◆ Available For Lease
- ◆ 6,072 SF on 0.64 Acres
- ◆ Warehouse Space: 3,000 SF +
- ◆ Fully Heated and Cooled
- ◆ Drop Ceiling in Warehouse
- ◆ Dock High Door (8' x 10')
- ◆ Zoned HI

Conveniently located off West Wendover Avenue and minutes from Interstate 40.

The building has a flexible floor plan including several offices with windows, a conference room, and breakroom.

The ceiling height in the warehouse is 9' - 10', there is plenty of parking with 20 spaces, and high speed Spectrum Fiber is installed.

JJ Joubran, CCIM
(336) 270-9775
JJ@JoubranCommercial.com



Office and Warehouse Building

500 S. Edwardia Drive | Greensboro, NC 27409



JJ Joubran, CCIM

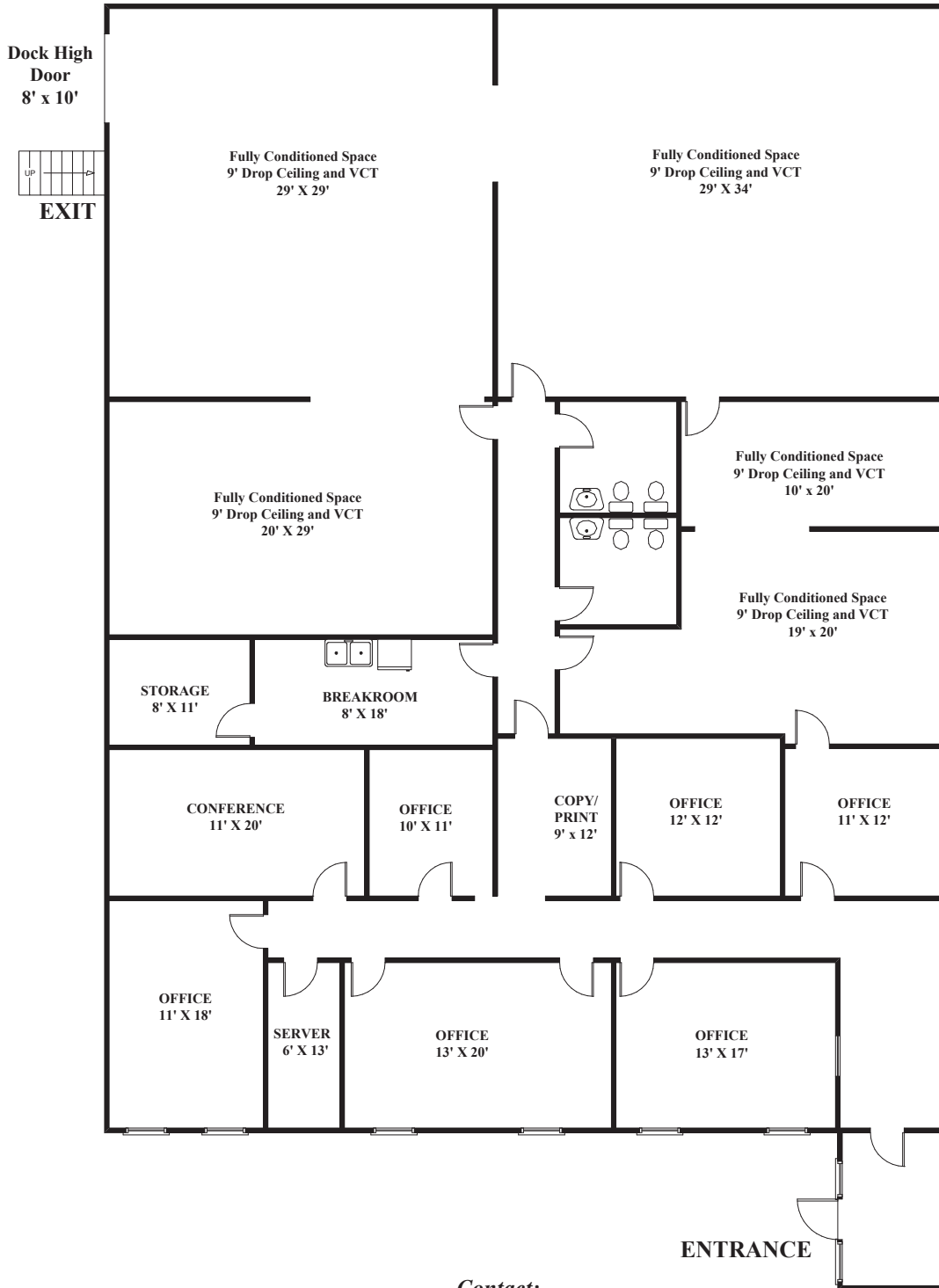
(336) 270-9775

JJ@JoubranCommercial.com



500 S. Edwardia Drive

6,072 SF +/-



Contact:
JJ Joubran, CCIM
Joubran Commercial Properties
(336) 270-9775
JJ@JoubranCommercial.com
www.JoubranCommercial.com